

Application Number 23/00916/FUL

Demolition of existing buildings and the erection of light industrial, general industrial and storage and distribution units together with associated parking and landscaping

Photo 1: Location plan

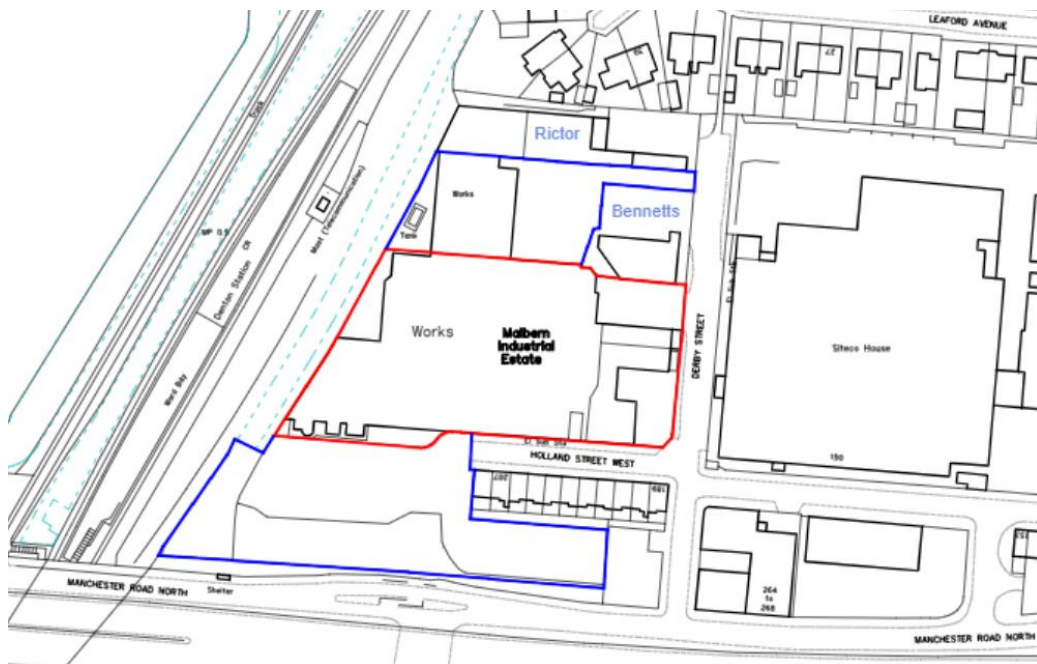


Photo 2: View of existing building and adjacent yard area



Photo 3: View eastward along Holland Street West



Photo 4: View westward along Holland Street West, from junction with Derby Street, and of existing yard entrance

